

Features

- Integrated thermister for accurate temperature compensation
- EEPROM programmed with sensor specific performance characteristics

Performance Characteristics

Nominal Range	0-5% vol. CO ₂
MTBF	>5 years
Minimum Resolution	0.005% CO ₂ at zero, 0.15% CO ₂ at range
Accuracy (-20°C to +50°C)	Within ±(0.1% vol CO ₂ + 4% of concentration)
Temperature Range	-20°C to +50°C
Pressure Range	700 to 1300mBar with compensation
T₉₀ Response Time	<35 seconds
Relative Humidity Range	0-99% RH (non-condensing)
Long Term Zero Drift	<80ppm CO ₂ per month
Repeatability	
Zero	<±0.003% CO ₂
5% CO₂	<±0.075% CO ₂
Warranty Period	12 months from date of despatch

N.B. All performance data is based on conditions at 20°C 50% RH and 1013 mBar, operated using CTL evaluation electronics.

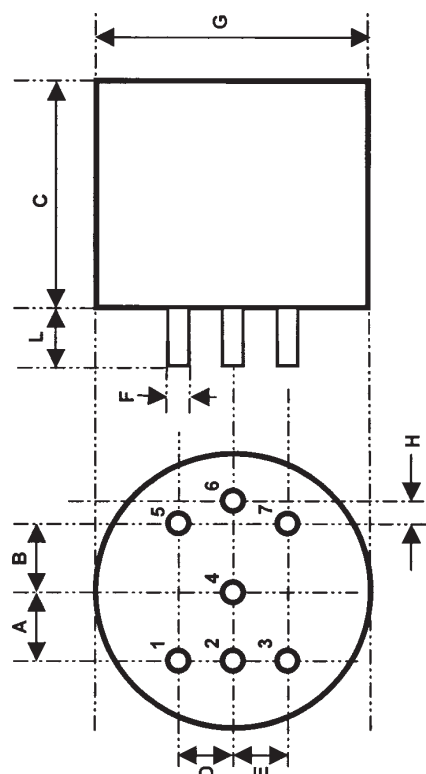
Physical Characteristics

Weight	23g
Position Sensitivity	None
Recommended Storage Temperature	-20°C to +50°C

Electrical Characteristics

Supply voltage	3-5V DC, 3.3V to utilise EEPROM cal.
Power consumption	<100mW at 3.3V
Recommended lamp frequency	2Hz, 50% duty cycle
Warm up time	<10 Sec

Outline Dimensions



Symbol	mm (nominal)	Pin	Function
A	5.0	1	Lamp return
B	5.0	2	Lamp +5V
C	16.6	3	+5V pyro supply
D	4.0	4	Detector output
E	4.0	5	Reference output
F	1.5 +/-0.05	6	Thermistor output
G	20.0	7	0V pyro supply
H	1.4		
J	15.0		
K	20.0		
L	4.7		

NB: 1. Label adds additional 0.2mm to IRceL diameter.
2. Allow 1mm additional height in instrument for potting meniscus.

IMPORTANT NOTE: Connection should be made via PCB sockets only. Soldering to the pins will seriously damage your sensor.

Product Approval



Approval Body: UNDERWRITERS LABORATORIES INC®
Test Standard: UL913
CSA.C22.2 No 157
Product Categories: Class 1, Division 1, Groups A, B, C, D
File Number: E180262



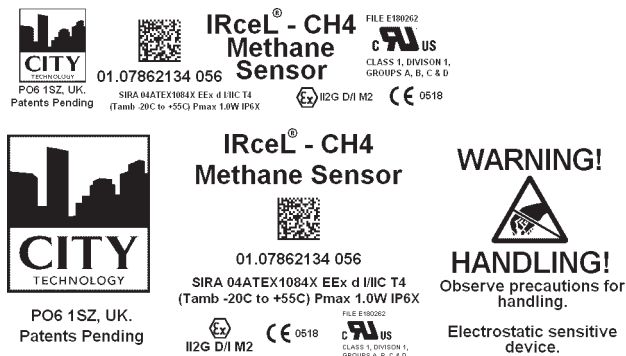
Approval Body: SIRACERTIFICATIONSERVICE
Test Standard: EN 50014:1997 (amendments A1 & A2)
EN 50018:2000
EN 50281-1-1:1998
Product Categories: EExd/IIC T4 (T_{amb} -20°C to +55°C), II2GD/IM2, 0518
Certificate Number: Sira 04ATEX1084X

Instructions specific to hazardous area installations (reference European ATEX Directive 94 / 9/ EC, Annex II, 1.0.6.)

The following instructions apply to equipment covered by certificate number Sira 04ATEX1084X;

1. The equipment may be used with flammable gases and vapours with apparatus groups IIA, IIB and IIC and with temperature classifications T1, T2, T3 and T4.
2. The equipment is certified for use in ambient temperatures of -20°C to +55°C.
3. The equipment has not been assessed as a safety related device (as referred to by Directive 94 / 9 / EC Annex II, clause 1.5).
4. Installation of the equipment shall be carried out by suitably trained personnel in accordance with the applicable code of practice (e.g. EN 60079-14)
5. Inspection and maintenance of this equipment shall be carried out by suitably trained personnel in accordance with the applicable code of practice (e.g. EN 60079-17).
6. Repair of this equipment shall be carried out by suitably trained personnel in accordance with the applicable code of practice (e.g. EN 60079-19).
7. Special conditions for safe use
 - 7.1. The IRceL is designed to be connected to a gas detector which shall provide an intrinsically safe supply and having a maximum output power (P_o) not greater than 1.0 watt.
 - 7.2. Because the IRceL has not been proven to withstand the impact and drop tests prescribed in EN 50014:1997 clause 23.4.3, additional protection shall be provided to ensure that it cannot be subjected to such mechanical stresses.

8. The certification of this equipment relies upon the following materials used in its construction;
- | | |
|---------------------|--|
| Enclosure material: | either 303 stainless steel, which contains less than 6% magnesium
or 304 stainless steel, which contains less than 6% magnesium |
| Flame arrester: | 316 stainless steel mesh |
| Cement: | CW2248/HY956EN |
| Manufacturer | Ciba-Geigy |
| Type of compound | Epoxy resin |
| Colour | Beige (natural) |
| Filler type and % | 55.2% trihydrated Al_2O_3 |
| Other additives | 8.3% |
| Surface treatments | None |
| Temperature index | 170°C |
| City Tech reference | RM497 |
- If the equipment is likely to come into contact with aggressive substances, then it is the responsibility of the user to take suitable precautions that prevent it from being adversely affected, thus ensuring that the type of protection is not compromised.
- Aggressive substances: e.g. acidic liquids or gases that may attack metals, or solvents that may affect polymeric materials.
- Suitable precautions: regular checks as part of routine inspections or establishing from the material's data sheet that it is resistant to specific chemicals.
9. The IRceL is available in several formats depending upon the optical filter and components employed. The Certification marking is shown below using the IRceL CH4 label as an example:



Every effort has been made to ensure the accuracy of this document at the time of printing. In accordance with the company's policy of continued product improvement City Technology Limited reserves the right to make product changes without notice. No liability is accepted for any consequential losses, injury or damage resulting from the use of this document or from any omissions or errors herein. The data is given for guidance only. It does not constitute a specification or an offer for sale. The products are always subject to a programme of improvement and testing which may result in some changes in the characteristics quoted. As the products may be used by the client in circumstances beyond the knowledge and control of City Technology Limited, we cannot give any warranty as to the relevance of these particulars to an application. It is the clients' responsibility to carry out the necessary tests to determine the usefulness of the products and to ensure their safety of operation in a particular application.

Performance characteristics on this data sheet outline the performance of newly supplied sensors. Output signal can drift below the lower limit over time.